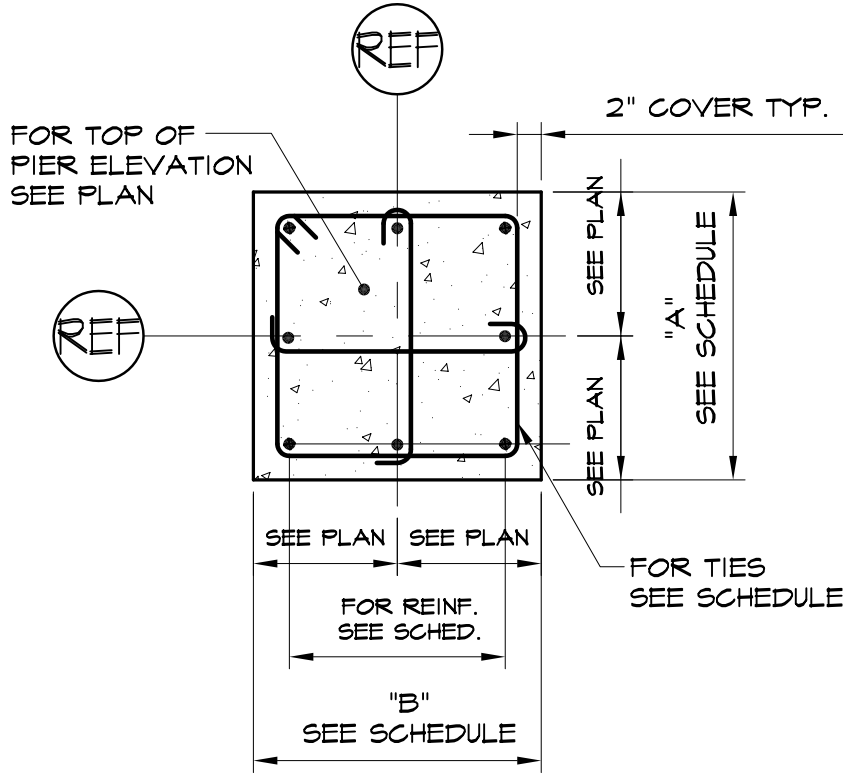




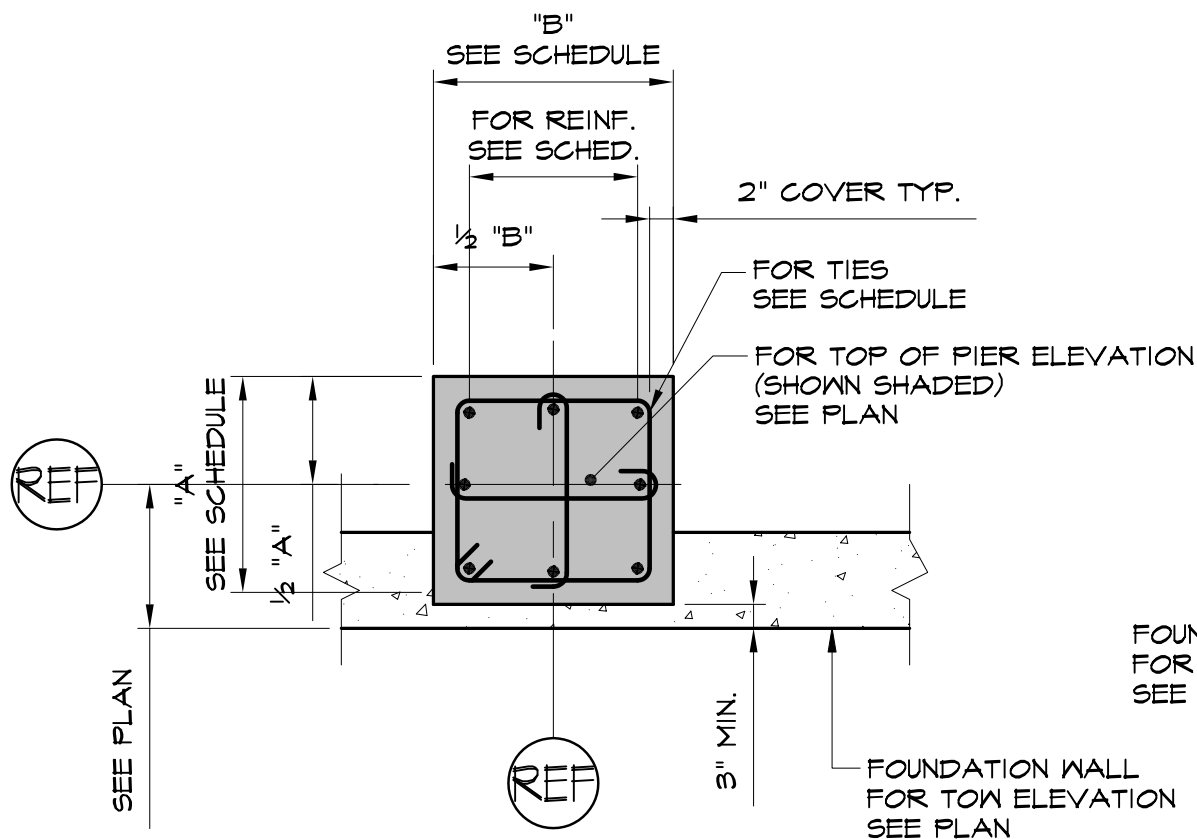
COLUMN SCHEDULE						
COL. NO.	C1	C2	C3	C4	C5	C6
LEVEL						
2ND FLOOR						
	110x34	110x45	110x44	110x33	110x34	110x44
GROUND FL.						
BASE PL TYPE	A	A	A	B	B	B
BASE PL SIZE "N" x "t" x "B"	16"x14"x1'-4"	16"x14"x1'-4"	17"x14"x1'-5"	16"x1x1'-4"	16"x11/2"x1'-4"	16"x14"x1'-4"

- COLUMN SCHEDULE NOTES:
- ALL TS COLUMNS SHALL BE ASTM A500 GRADE B.
  - ALL WF COLUMNS SHALL BE ASTM A572 GRADE 50.

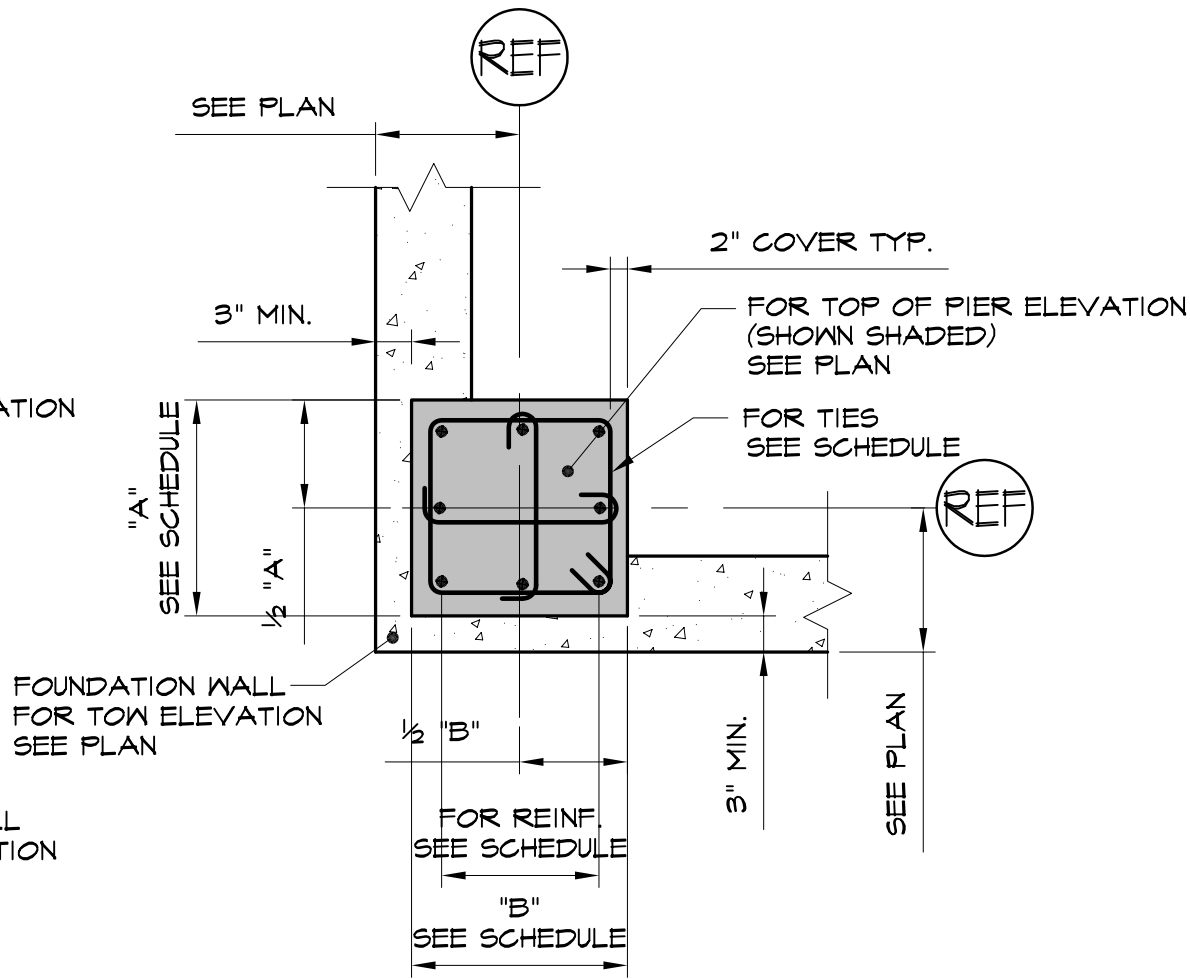
PIER SCHEDULE				
MARK	TYPE	SIZE "A"x"B"	REINFORCING	TIES
P1	A	24"x24"	8-#6	#3@12"
P2	B	24"x24"	8-#6	#3@12"
P3	C	24"x24"	8-#6	#3@12"



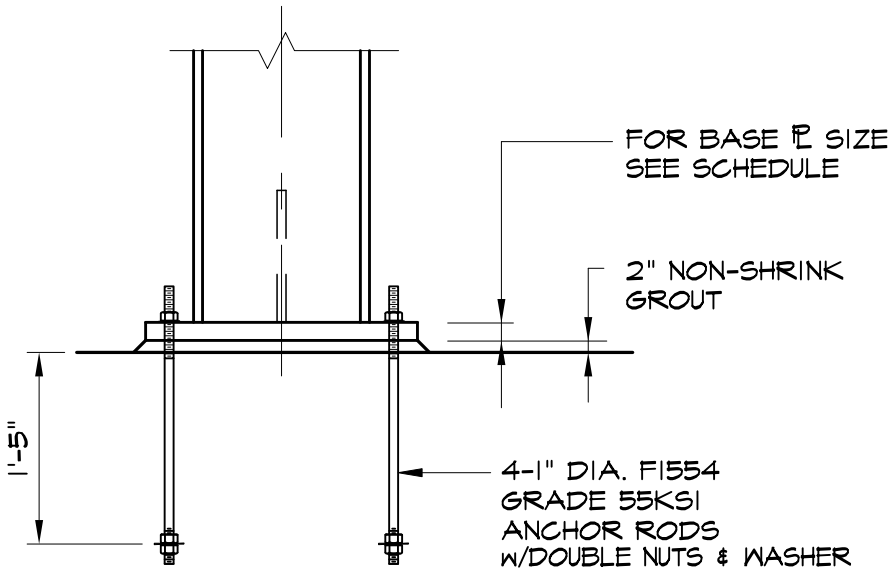
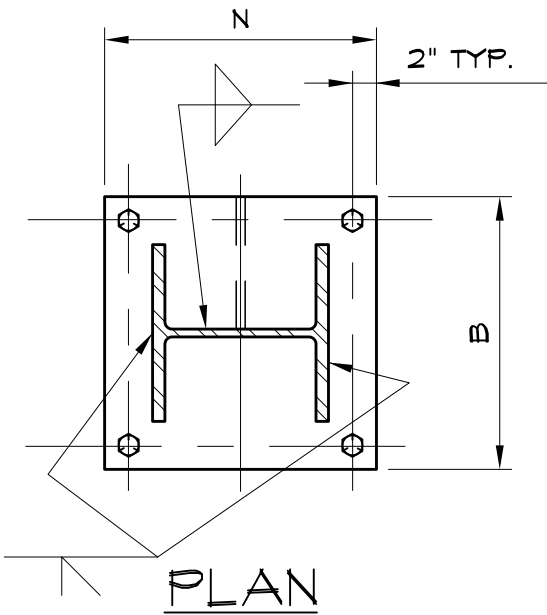
PIER DETAIL TYPE A



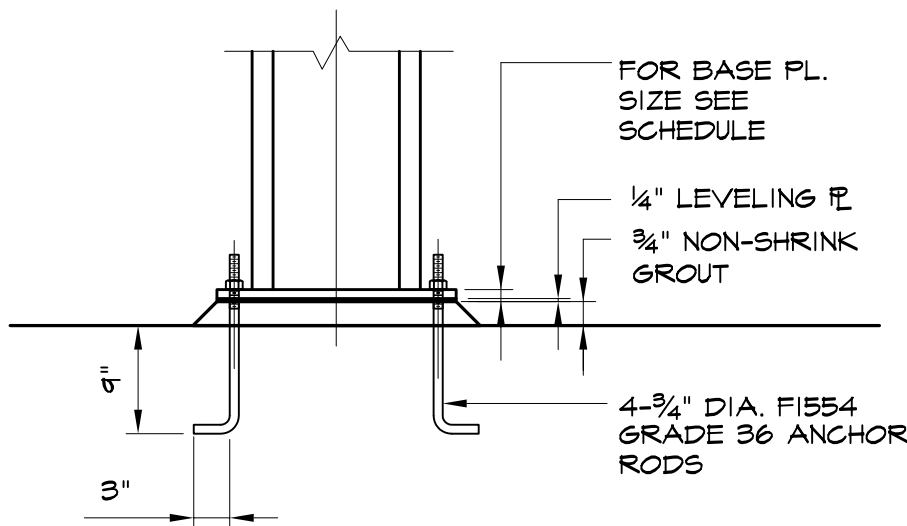
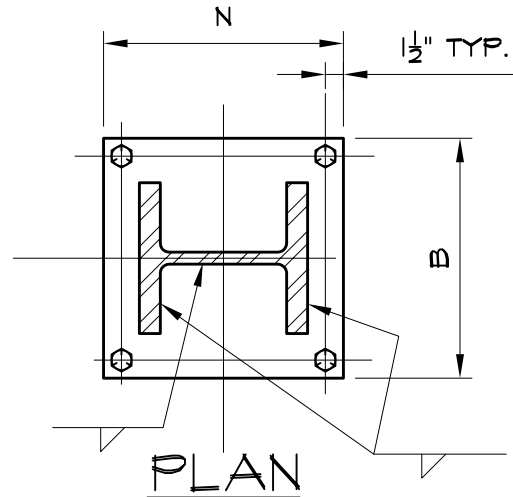
PIER DETAIL TYPE B



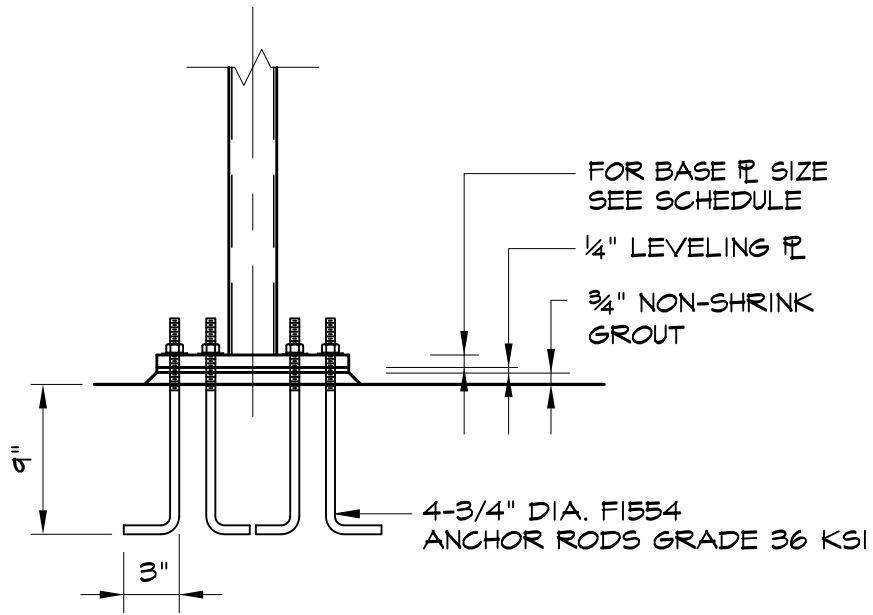
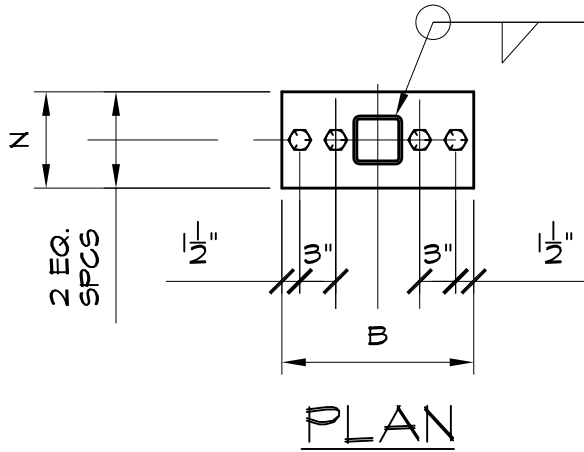
PIER DETAIL TYPE C



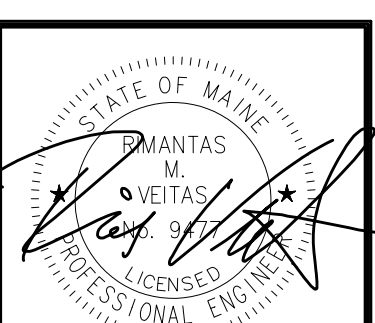
SECTION  
BASE PL TYPE A



SECTION  
BASE PLATE TYPE-B



SECTION  
BASE PL TYPE C



Prepared For:  
**118 on Munjoy Hill, LLC**  
118 CONGRESS STREET  
PORTLAND, ME 04101

Consultant:  
**VEITAS VEITAS** engineers  
480 Grand Street, Suite 301  
Beverly, Massachusetts 02214  
TEL: (617) 845-5283 FAX: (617) 845-5205

Architect:  
**ARCHITECTYPE Architects**  
48 Union Wharf Portland, Maine 04101  
(207) 772-6022 Fax (207) 772-4056

Project:  
**118 ON MUNJOY HILL**  
118 CONGRESS STREET  
PORTLAND, MAINE

Revisions:  
100% CONSTRUCTION DOCUMENTS

Date: 5 MAR 2014  
Scale: As indicated  
**Column and Pier Schedules and Details**

**S3.01**